



THE BOARD **SOURCE**

INSIGHTS

That's a Wrap!



We're excited to share CareerSource Central Florida's 2019-2020 Annual Report with you, highlighting our accomplishments from the past fiscal year. We couldn't do any of it without the support of our Consortium and Board members, committed partners, and dedicated CSCF staff.

We encourage you to take a few minutes to read through it and recognize the impact your efforts have made to change people's lives, transform businesses and create more prosperity for our community.

[View the Digital Version](#)

Welcome Aboard!

We have an amazing Board of Directors at CSCF, and we're adding two new members to help fulfill our mission. We'd also like to welcome our newest Consortium members to CSCF - See them all below!





Kari Conley
Government & Community Relations
Manager
Duke Energy
 12.17.20 – 6.30.22

Kari has more than 25 years of experience in corporate philanthropy and citizenship and is currently the Government and Community Relations Manager for Duke Energy Florida. In her current role, she collaborates with local municipalities and key leaders to achieve sustainability goals, and develops local philanthropic strategies to use Duke Energy Foundation, community development and relationship building. She's worked in Community Relations for Orlando Health and Orlando Magic and is active in the community serving on numerous Boards and earning many awards and recognitions.



Stella Siracuza,
Chief Financial Officer
Tomato Express
 12.17.20 – 6.30.23

Stella Siracuza, native of Argentina, is a small business owner for a family business - a supermarket, deli and bakery dedicated to the delicacies of South American countries. She's a current board member of the Kissimmee/Osceola Chamber of Commerce, and the Hispanic Business Council and previously served on the Heart of Florida United Way and the Osceola Council on Aging Boards. Stella is also a realtor and believes in the importance of unity and community involvement.

Welcome CareerSource Central Florida's Newest Consortium Members

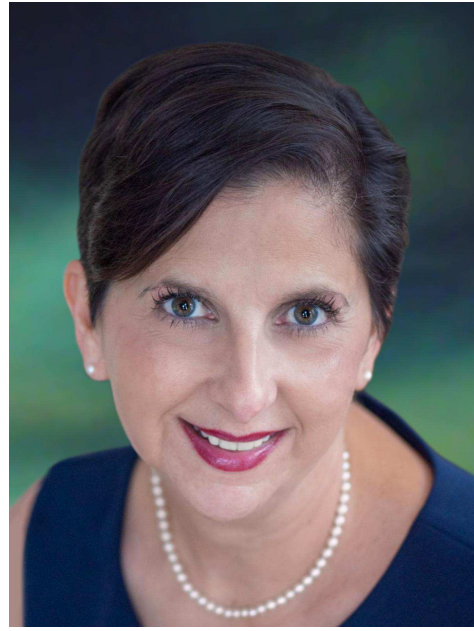


Commissioner Peggy Choudhry
Osceola County

Commissioner Gary Search
Sumter County



Commissioner Josh Blake
Lake County



Commissioner Andria Herr
Seminole County

We'd like to extend our appreciation to the Consortium members for their service to CareerSource Central Florida -- Commissioners Brandon Arrington, Al Butler, Leslie Camapione and Lee Constantine.

TRENDS

Diversity. Equity. Inclusion



CSCF and others in Orlando's business community signed a commitment to improve regional diversity, equity and inclusion (DEI) with a "Take the Pledge" initiative recently. Pam Nabors is among the 73 CEOs and top executives that added their companies' names and joined the regional effort. The effort is focused on raising the growth potential within the workplace and of its residents by creating opportunities for those long-affected by racial inequality and ensuring pathways for participation in the economy.

Read More About the Initiative

Gov. DeSantis Recognizes Accomplishments of CareerSource Florida Network

Governor DeSantis recently recognized the CareerSource Florida Network of Workforce Boards for their work and accomplishments during an unparalleled year. The statewide network provided vitally needed workforce services without interruption to Floridians during the pandemic to help career seekers secure employment, enroll in training and connect businesses with skilled talent.



Read the Press Release

Quarterly Engagement Survey Reminder



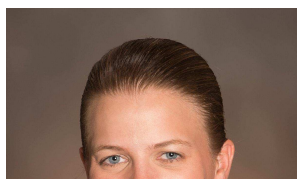
As a reminder, please complete the brief, three-question quarterly survey on your board engagement activities. Thank you to those who have previously taken this survey.

A big thank you to Board members **Andrew Albu** who connected TopGolf in Lake Mary with CSCF to assist in hiring 200 new employees, and **Wendy Ford** who mentioned our partnership in a recent interview with the Washington Post. Thank you!

Take the Engagement Survey

Spotlight

Congratulations Are in Order!



We extend our warmest congratulations to CSCF Board Member, Dr. **Kathleen Plinske**, who has been named Valencia



College's newest President starting in June. Dr. Plinkse, currently serves as Executive Vice President, Provost, and Campus President of the Osceola, Lake Nona, and Poinciana Campuses at Valencia College in Orlando. Congratulations Kathleen!

Upcoming Board and Committee Meetings

All Committee and Consortium Meetings will be held virtually.

- **Finance & Audit Committee - Tuesday, Feb. 9, 2021 | 2:30 – 4:00 p.m.**
- **Executive Committee - Thursday, Feb. 18, 2021 | 2:00 - 3:30 p.m.**
- **CSCF Board Meeting -Thursday, Feb. 25, 2021 | 9:00 – 10:30 a.m.**

2020-2021 PY Board & Committee Meeting Schedule

CONNECT WITH US!



1-800-757-4598

www.careersourcecentralflorida.com

A proud partner of the **AmericanJobCenter**® network

CareerSource Central Florida is an equal opportunity employer/program. Auxiliary aids and services are available upon request to individuals with disabilities. Disponible en Español.

CareerSource Central Florida | 390 N. Orange Ave. , Suite 700, Orlando, FL 32801

[Unsubscribe {recipient's email}](#)

[Customer Contact Data Notice](#)

Sent by communications@careersourcecf.com powered by



Try email marketing for free today!